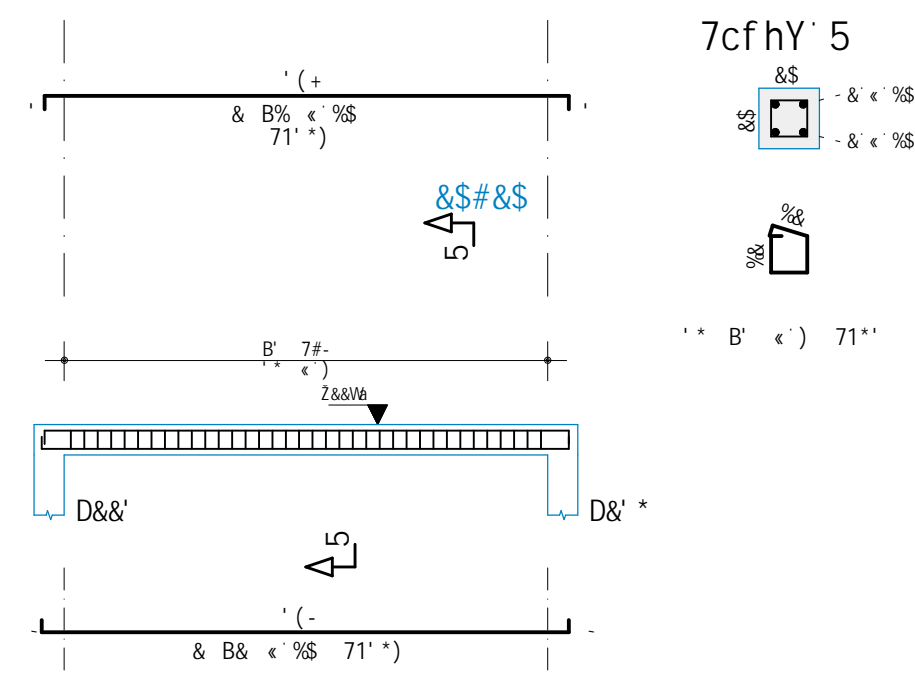
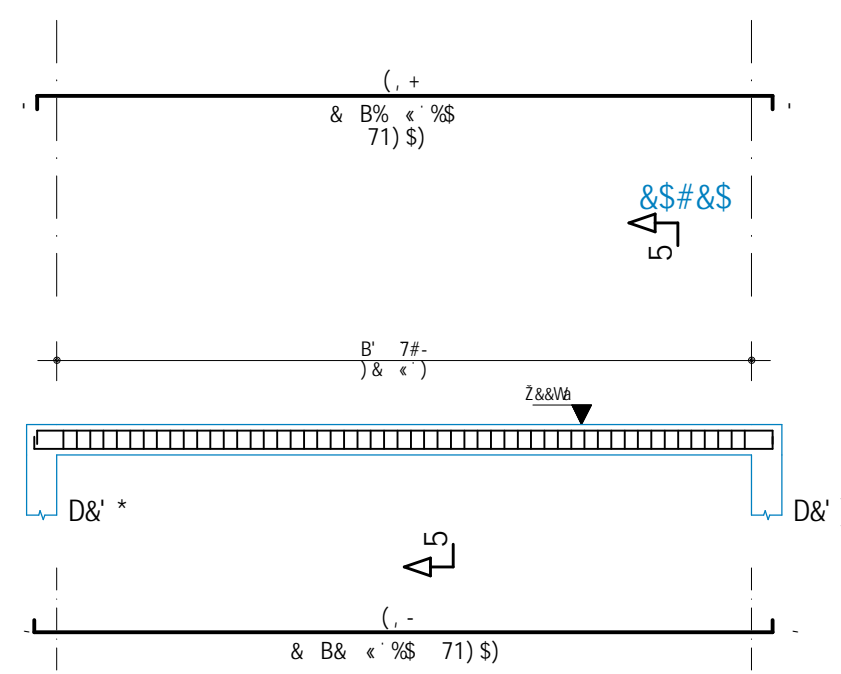
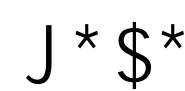
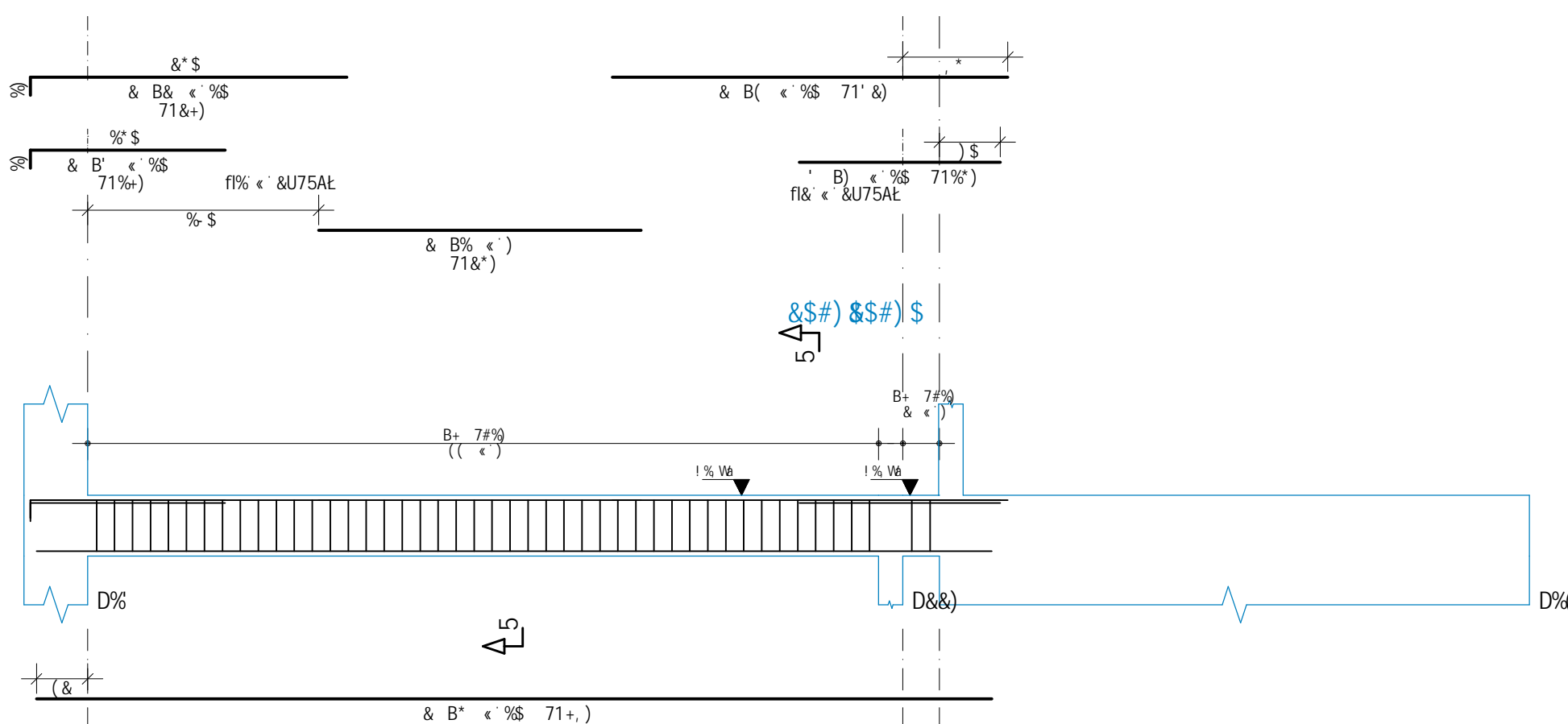
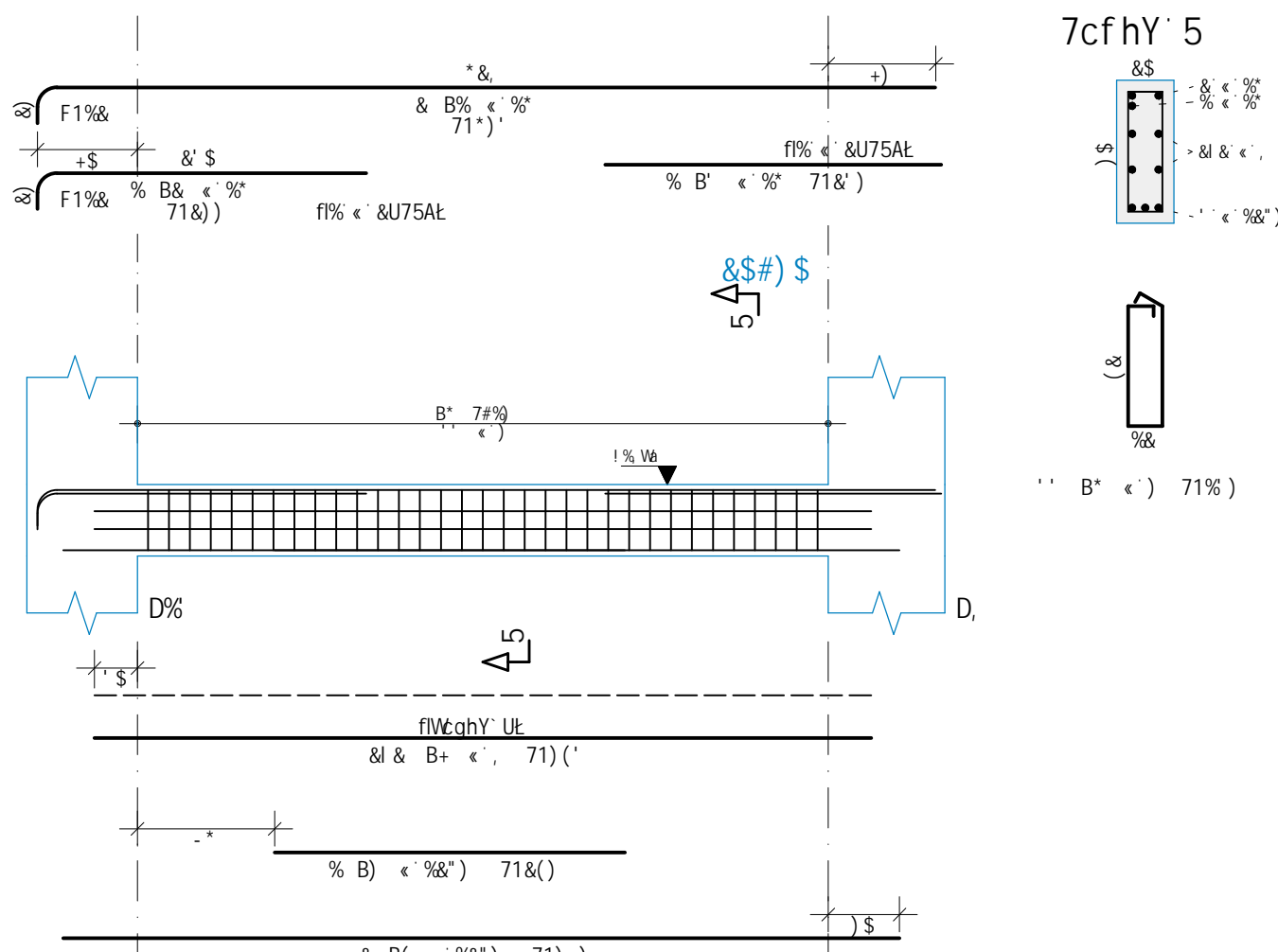
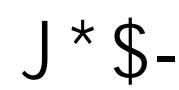
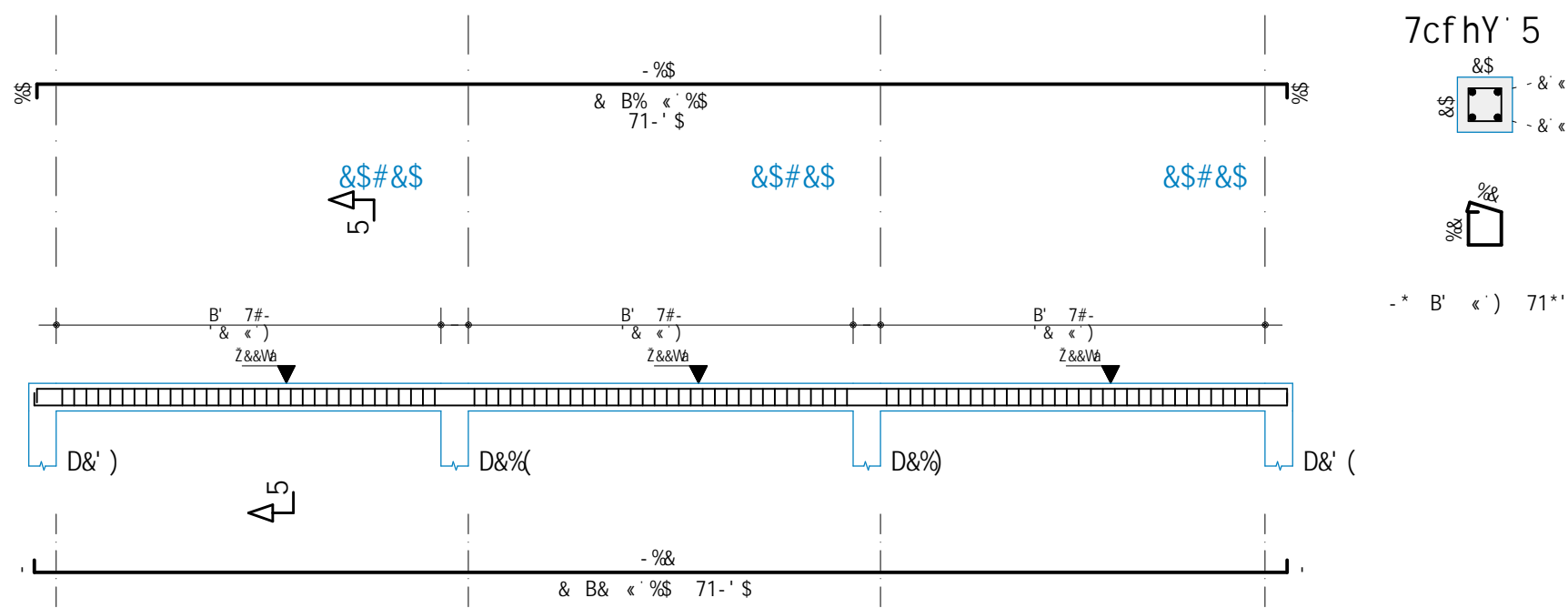
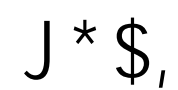
[illegible][illegible]

C69F9J5uE9C : 9F5-G

9GD97c = 75uE9G H7B+75G ; 9F5=G		
ZuE	'S ADU n7' S G8S 8%t	7C6F=9BHC
5 F9 58C ; F5I 8C.	V7Hn % flazl % "aet	mt WHC : 0.000 ; 100% B000
G8I AD.	9qZ & W8	J= 5G ; (\$ aa
9qZ	'% DU	D=5F9G ; (\$ aa
755.	====	05F9G.) ; (\$ aa
5HCF 5H7.	0S2))	7CBH9BuC ; (\$ aa
	mt WHC : 0.000 ; 100% B000	D=5F9G 9A 7CBH8G 7CA G0HC ; ( ) aa
		5uC. 75 ) S Y 75 S % flj ) XY hUvY qX YV ZYffcc

FS{		
FS'		
FS&		
FS%		
FS\$	01/09/2025	PROJETO EXECUTIVO - LICITAÇÃO DA OBRA
bs f'ij  g-c	XUhlJ	XYgWf   , -c


**MPMG**  
 Ministério Público  
 do Estado de Minas Gerais


**fábrica** civil  
 engenharia de projetos  
[www.fabricacivil.com.br](http://www.fabricacivil.com.br)

SEDE DAS PROMOTORIAS DE JUSTIÇA DE IPATINGA-MG

AV. DESPACHANTE RUI D'ALMA BARBOSA, Nº31 - CENTRO - IPATINGA/MG  
7CBHF5H5BH9.

A=B=GhVf=C' D! 6@=7C' A=B5G ; 9f5=G	
7C8F88 8C 5FA5uE'C' 89' J=; 5G' ! ' 9@)	J*\$% #' J*\$& #' J*\$' #' J*\$( J*\$) #' J*\$* #' J*\$+ #' J*\$,

51 HCF 8C DFC 9HC		J*\$. 5G-BSH F5	8-G7-D8-B5
F<5F' 89' 5@A9=85' 75F8CGC			9GH

9B 9B-C=FC 7=J=®	7F95 A: 7) &+S#8	5G=BSHF.F5.	9H5D5 8C DFC=9HC
F9GDCBGJ98 Hv7B=7C.			9L97I H=JC
F<5FÈ 89' 5@A9=85' 75F8CGC			
9B 9B-C=FC 7=J=®	7F95 A: 7) &+S#8		

7CFCB9858CF 8C DFC>9HC		5GCB=BSH1F5.	: 0E=5.
5B8F9' J" ' @5DF9; 5			
5FE1=H9HC' 9 I F65B=GH5	CAU - A83754-7		
9C75G5	80CDB=C	76B=C' 8C DFC>9HC	

%)\$	F<5FÈ·75F8CGC	%)\$)*#&\$&'	072/108
------	---------------	--------------	---------